

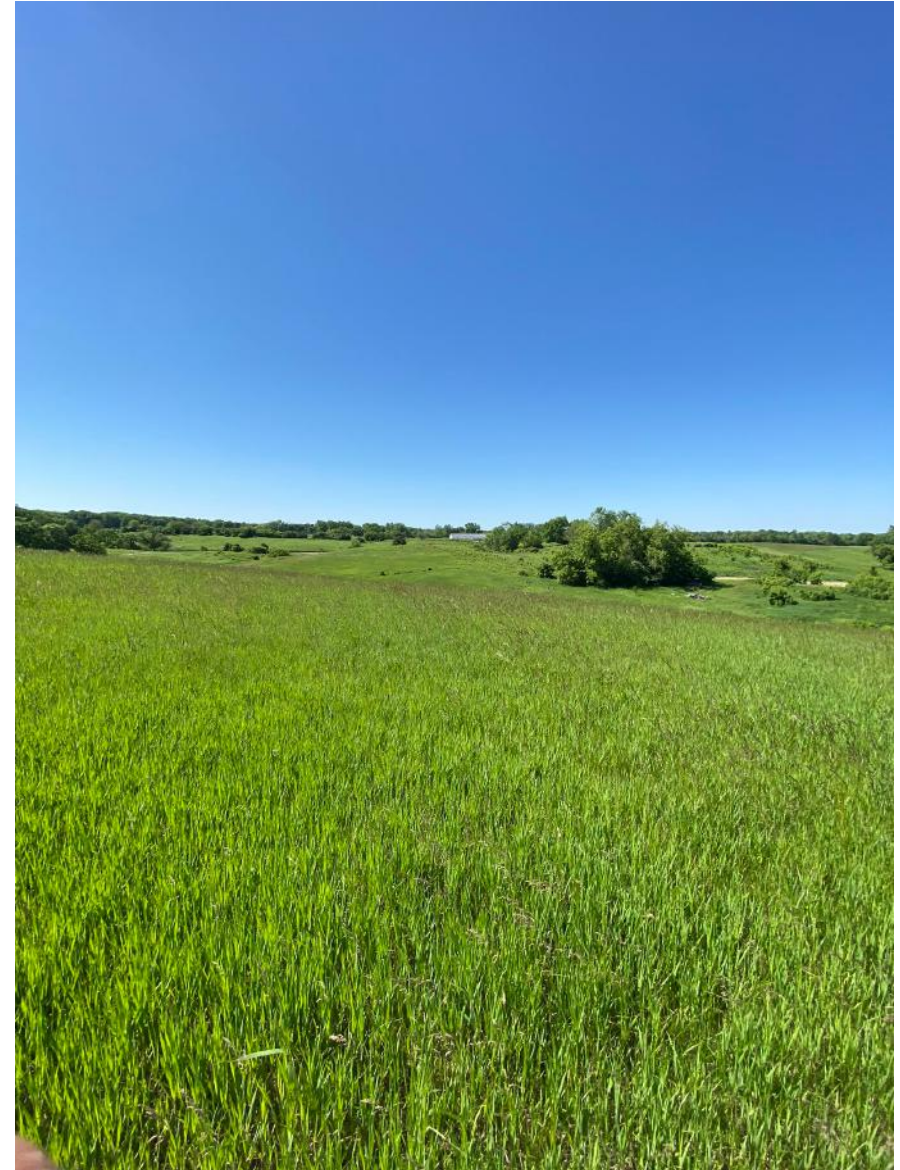
Horizon Farm Public Meeting

Barrington's White House
6/14/22



Mission

Protect and preserve public open space “in a natural state for the education, pleasure and recreation of the public now and in the future.”



Guiding Principles



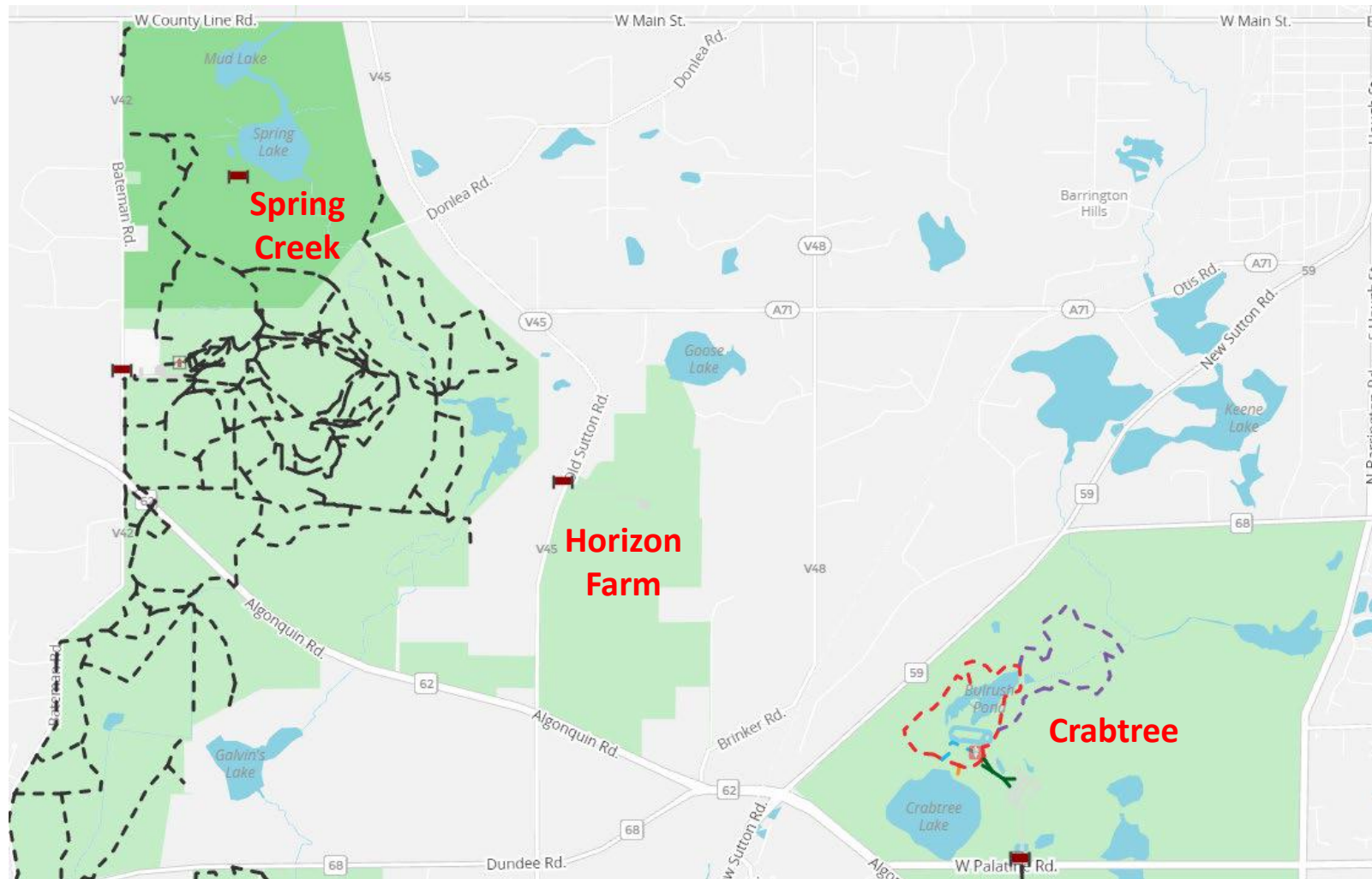
Moving Towards Racial Equity

- Ensure major recreational facilities are well-distributed across the Forest Preserves, accessible, and well-maintained

Nature Compatible Recreation

- Transform or repurpose programs and facilities that are incompatible or unsustainable to nature-compatible uses

About the Site



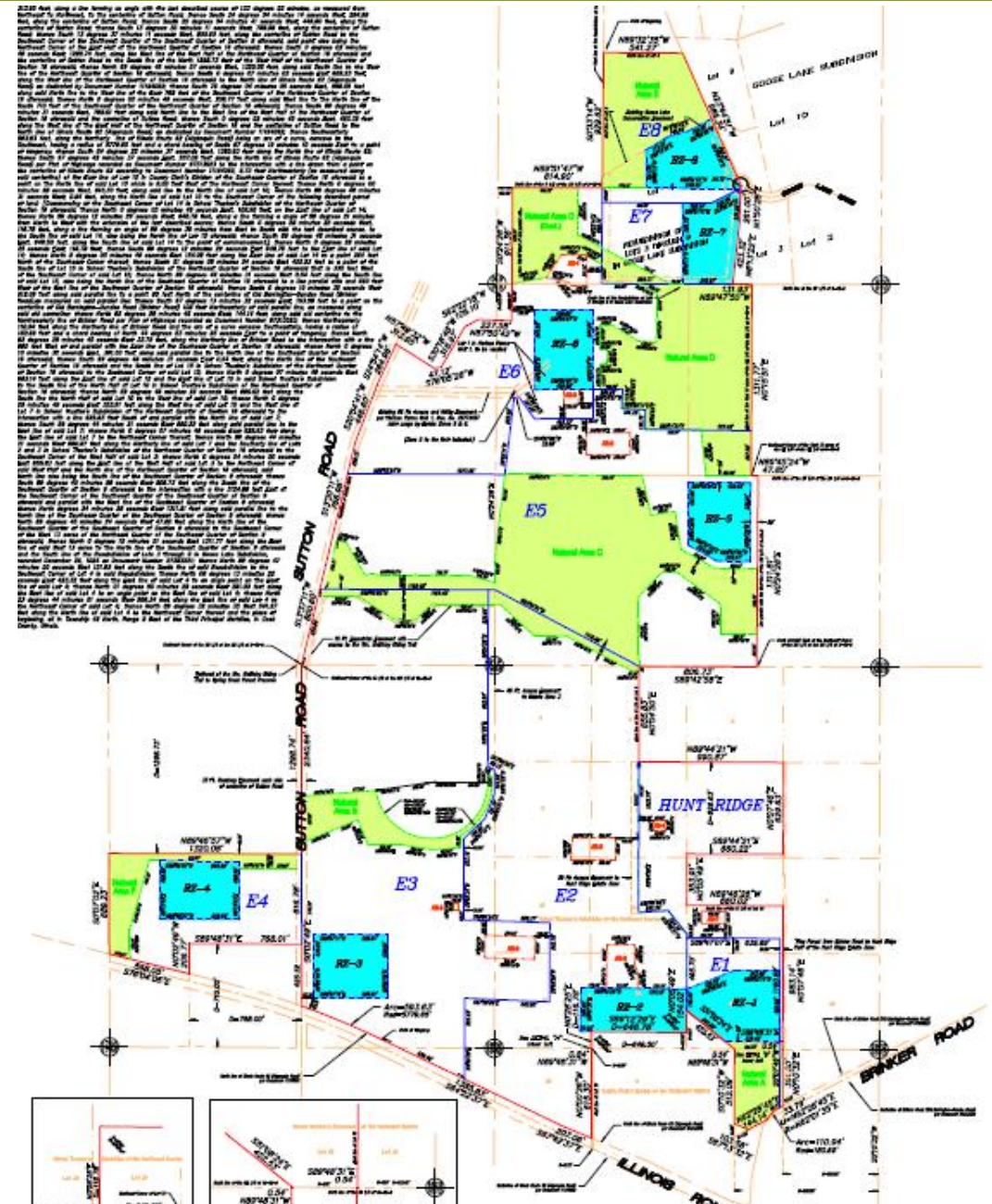
About the Site

- Strategic location: Spring Creek to the west, Crabtree to the east
- Natural resource value
- Recreational potential with connections to Spring Creek
- Habitat connection
- Watershed protection to Spring Creek



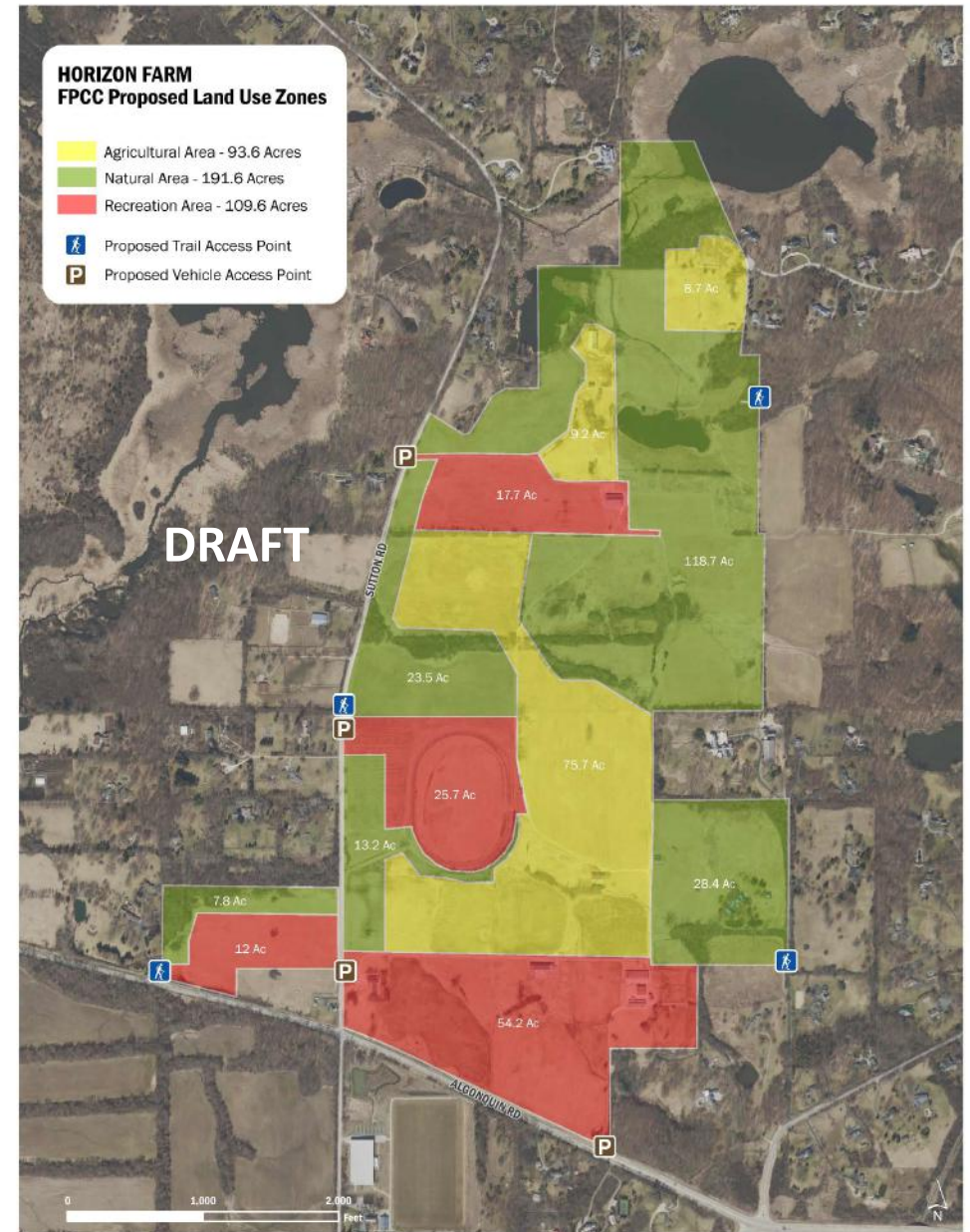
Existing Conservation Easement

- Natural area: ~90 acres
- Also designates residential zones and agricultural building zones



Proposed Conservation Easement

- Natural Area: 191.6 acres
- Agricultural Area: 93.6 acres
- Recreation Area: 109.6 acres



NATURAL AREA

- **ALLOWED**

- Passive recreation
- Recreational trails (pre-approved by FPCC and BACT)
- Late season hay mowing
- Restoration activities
- Existing roads
- Special events on approved trails (permit required with notice to BACT)

- **PROHIBITED**

- Disturbance, except restoration activities that benefit flora & fauna or maintenance of existing improvements
- Fishing or swimming
- Lighting
- Off-trail riding
- Any use prohibited under FPCC code

AGRICULTURAL AREA

- **ALLOWED**

- Passive recreation
- Recreational trails (pre-approved by FPCC and BACT)
- Late season hay mowing
- Restoration activities
- Existing roads
- Agricultural activities
- Seed nursery and associated structures
- Dredging
- Special events (permit required with notice to BACT)

- **PROHIBITED**

- Fishing or swimming
- Off-trail riding
- Any use prohibited under FPCC code

RECREATION AREA

- **ALLOWED**

- Passive recreation
- Recreational trails (pre-approved by FPCC and BACT)
- Equestrian related facilities or activities (with FPCC approval)
- Support buildings
- Turf mowing
- Existing roads
- Special events (permit required with notice to BACT)

- **PROHIBITED**

- Golf courses or driving ranges
- Permanent accessory-use structure related to sports (medium to high impact)
- Campgrounds
- Aquatic centers
- Fishing or swimming
- Any use prohibited under FPCC code

Site Planning Principles

- Respects conservation easement limitations
- Establishes connection to Spring Creek Preserve
- Simple enough for everyone to understand and use
- Sustainable – built to last and has clear maintenance responsibility
- Nature-compatible recreation

“Fundamentally, this District is not a park, as one thinks of a city park, nor is it a group of outer parks. It is a forested sanctuary, a naturalistic reservation with recreational facilities for intensive use on the fringes, which is designed to meet all of the anticipated public demands as they arise, and as they may properly be exercised in a forested area. The trail system, multipurpose in character, is the skeleton framework which ties the preserves together. It is the means by which the public may be led to and through undisturbed areas, whether on foot, horseback, or bicycle.”

*- John Barstow Morrill, Forest Preserves
Landscape Architect, 1957*

Opening Plan

- Makes use of already impacted areas
- Re-establishes historic connections
- Adds connection from 165 Algonquin
- Fall 2022 opening



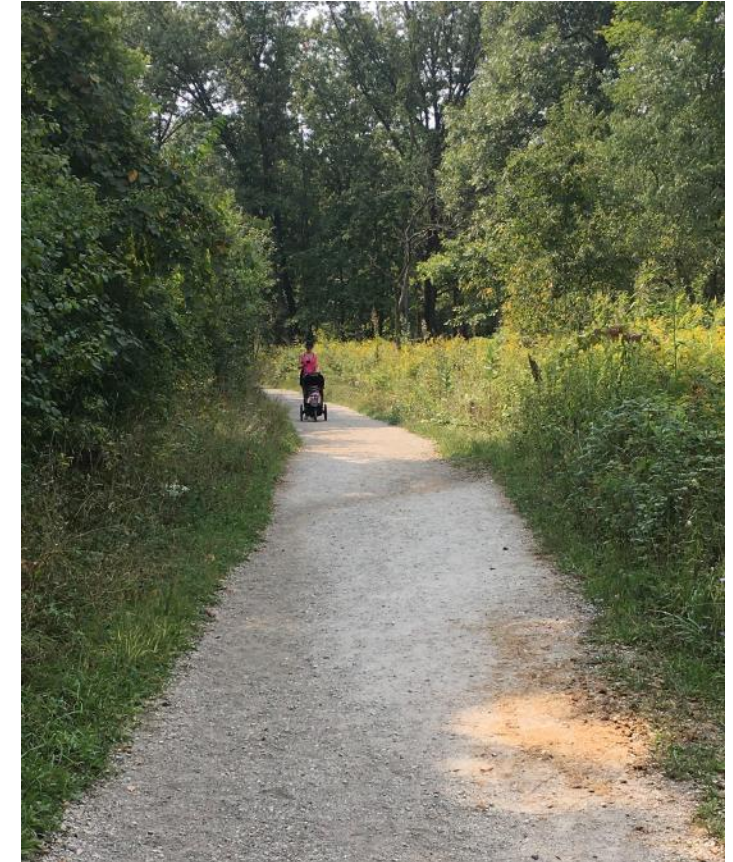
Opening Plan - Trails



Existing road, Horizon Farm

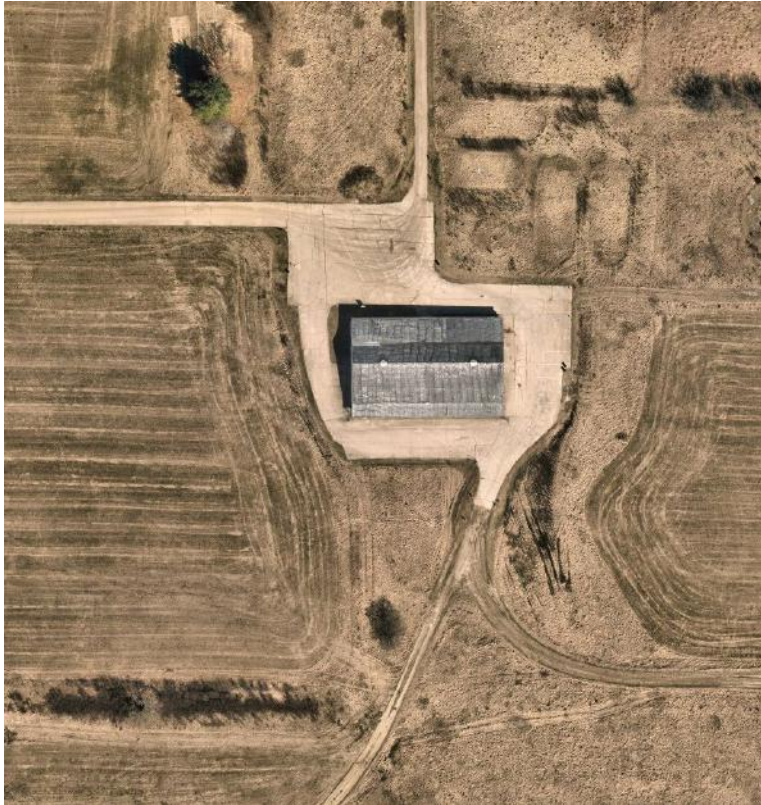


Mowed trail example

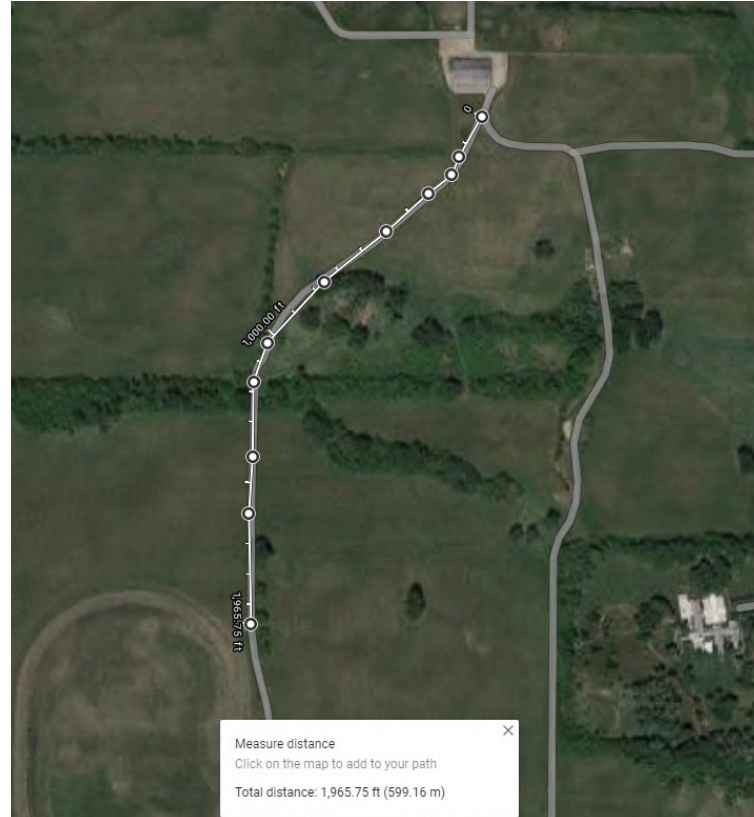


Unpaved trail example

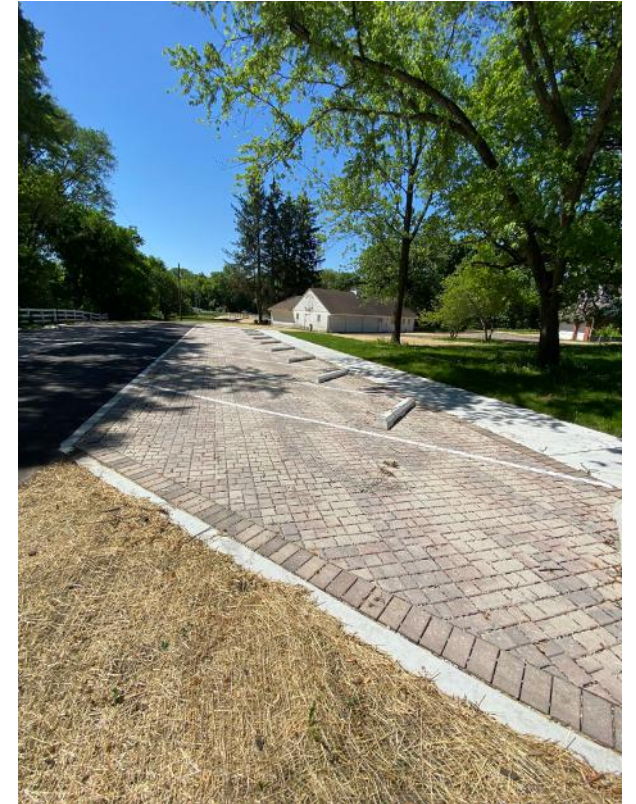
Opening Plan – Parking Lots



Parking lot, Horizon Farm



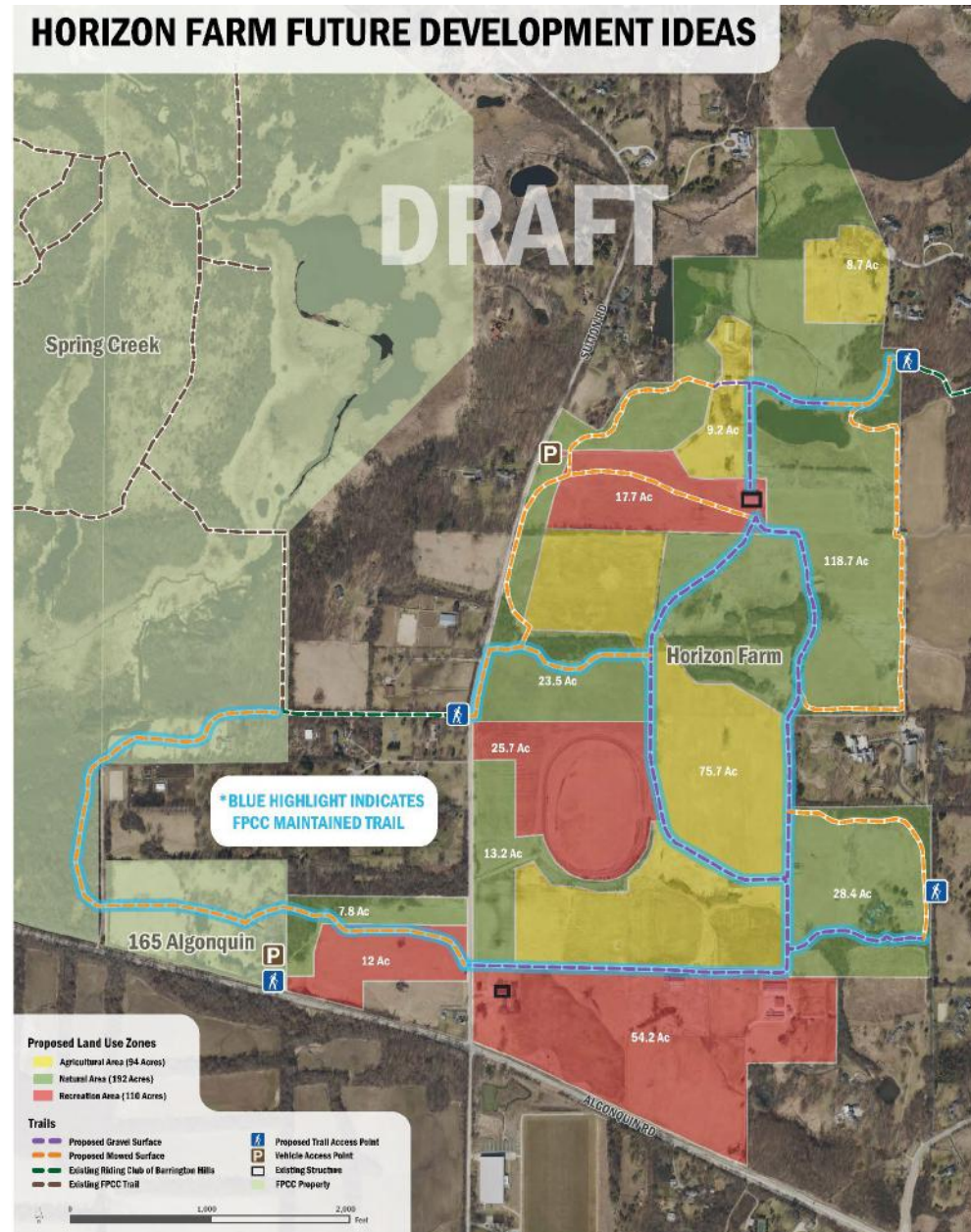
Distance between track and parking lot: ~
2000 ft



Parking lot, 165 Algonquin

Potential Development Plan

- Additional mowed trails?
- Spring Creek connection
- Restoration priorities
- New amenities?
 - Parking lots
 - Restrooms
 - Program shelter
- Reuse, repurpose, or remove amenities?
 - Track
 - Barn
 - Vacant buildings at 165 Algonquin



Restoration Goal

- Grassland bird habitat conservation practices (per Partnering for Birds)
 - Keep grasslands of 40 – 250 acres free of trees and shrubs by regular burning, mowing, or haying
 - Remove brush and trees to join disconnected fields into a larger habitat
 - Perform conservation mowing or haying after August 1



A male bobolink

New Amenities – Restrooms – Where?



Comfort station, Busse Woods



Vault facility, Bremen Grove

New Amenities - Program Shelter – Desired? Where?



Program Shelter, Chicago Portage

Reuse, repurpose, or remove amenities? - Exercise Track



Where would parking be located?

Reuse, repurpose, or remove amenities? - Barn



Reuse, repurpose, or remove amenities? - 165 Algonquin Buildings



Timeline



Questions?

**Questions can also be sent to
planning@cookcountyil.gov**